

Switchamajig IR Quick-Start Guide

Thank you for purchasing a Switchamajig IR. We hope you find it to be an essential tool for accessing important parts of your life, and encourage you to share your experiences and suggestions with us.

Your Box Should Contain:

The Switchamajig IR, a multi-region power supply, and a USB cable.

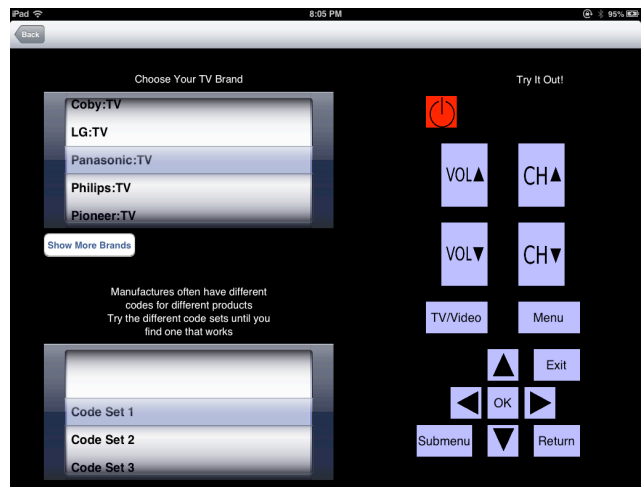
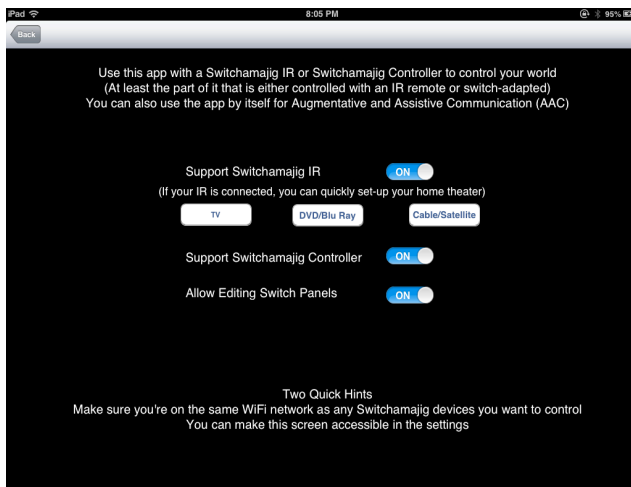
To get started, you will also need:

- A WiFi network
- A PC (Mac OS-X (64 bit only), Windows XP, or Windows 7) to configure the Switchamajig IR to join your network
- The Switchamajig IR driver and configure program, which you can download from www.switchamajig.com/support
- An Apple iPad with the Switchamajig app installed (it's free on iTunes.)
- Something with an IR remote that you want to control

Here's what you do:

- 1) Install the driver on your computer
- 2) Connect the Switchamajig IR to your computer with the USB cable
- 3) Run the configure program. It will detect the IR unit, look for networks you can join, and ask you for any needed codes to join the network. Make sure to save the network settings!
- 4) Disconnect the Switchamajig IR from your computer, take it to the room with your TV (or whatever you want to control) and plug it in
- 5) Make sure your iPad is on the same network you chose for the Switchamajig IR
- 6) Run the Switchamajig App

When you first run the Switchamajig App, it will show you a quick-start wizard. You can choose from a few options and tell the app about your TV, DVD/Blu Ray player, and Cable/Satellite box. For each device, select the manufacturer and then try the mini-remote with different code sets to find the best match. Navigate back to the main screen to start Switchamajigging.



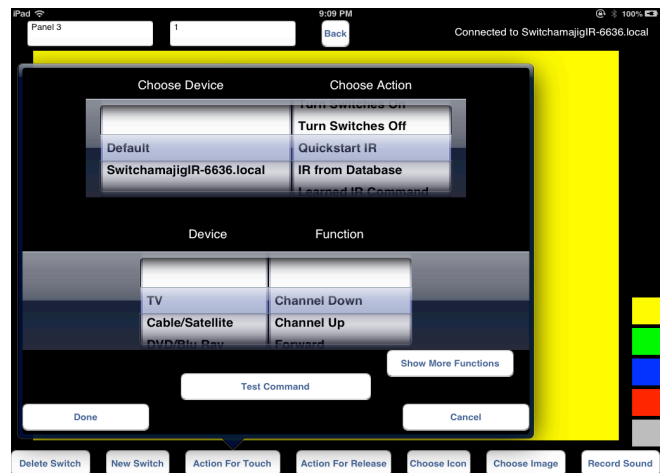
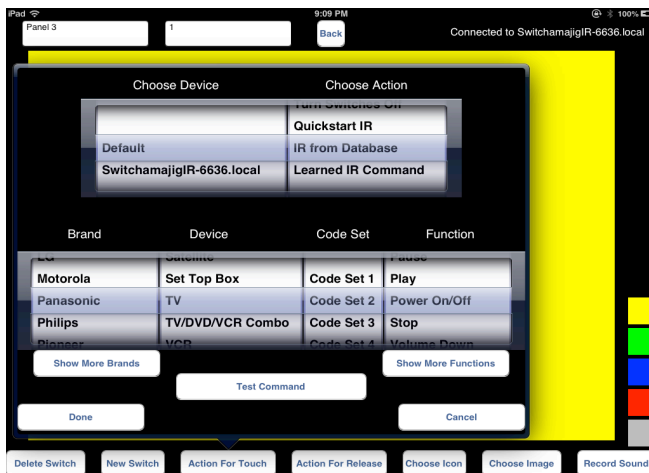
More Details About Your Switchamajig IR

Please take a look at the various options you have in the Settings for the Switchamajig app. You can enable and disable much of the functionality, including the ability to create and edit panels and to show the quick-start wizard again. Once you have the screens the way you want them, we recommend disabling all of the configurability to prevent accidentally changing something.

The App comes with several built-in switch panels, but you can also build your own. If you allow editing in the settings, you'll have buttons that let you add buttons, resize them, add images to them, and even add sounds. To work with the Switchamajig IR, though, you need to define actions.



It's most natural to define actions that happen when you touch a button. For the Switchamajig IR, you can define a command on the devices you configured in the quick-start wizard, a command from our large database, or a command you “teach” the Switchamajig IR by pointing your IR remote at its “IR Learning” sensor. You can test each command to make sure it does what you want.



Once your app is configured, it should be really easy to use. If you get stuck along the way, don't hesitate to ask us for help. You can reach us at support@switchamajig.com.